

*Box Plus 2*

# Box Plus 2



## MACCHINA PIEGA-INCOLLATRICE BOX PLUS 2

Macchina di nuova costruzione, progettata e realizzata in Italia, creata per la realizzazione di:

1. Astucci lineari
2. Astucci a fondo automatico
3. Cartelline con una o due tasche (opzionale su richiesta - Tipper Plate)
4. Buste e cartelline con soffiato, e cartelline di presentazione (opzionale su richiesta - Tipper Plate)
5. Buste porta CD/DVD con una o due tasche (opzionale su richiesta - Tipper Plate)
6. Buste da 12\*15 cm fino a 70\*100 cm formato aperto (opzionale su richiesta - Tipper Plate)
7. Buste per referti medici, buste speciali (opzionale su richiesta - Tipper Plate)
8. Applicazione di nastro biadesivo (opzionale su richiesta - Rap)
9. Buste da corriere (DHL, FedEx, TNT, etc.) con nastro biadesivo e tear tape (opzionale su richiesta - RAP Strip)
10. Macchina predisposta all'aggiunta di un inserter (opzionale su richiesta - Inserter)
- NUOVO** 11. Cartelline e buste con dorso (opzionale su richiesta - Sistema 3D)
- NUOVO** 12. Incollatura a freddo (opzionale su richiesta)
- NUOVO** 13. Possibilità di incollaggio contemporaneo verticale e orizzontale
- NUOVO** 14. Lettore codice a barre (opzionale su richiesta)
- NUOVO** 15. HP Inkjet (opzionale su richiesta)
- NUOVO** 16. Lettore alfabeto Braille

Aggiungendo il sistema di rotazione su richiesta, una varietà di applicazioni complesse possono essere realizzate in un unico passaggio



## BOX PLUS 2 FOLDER-GLUER MACHINE

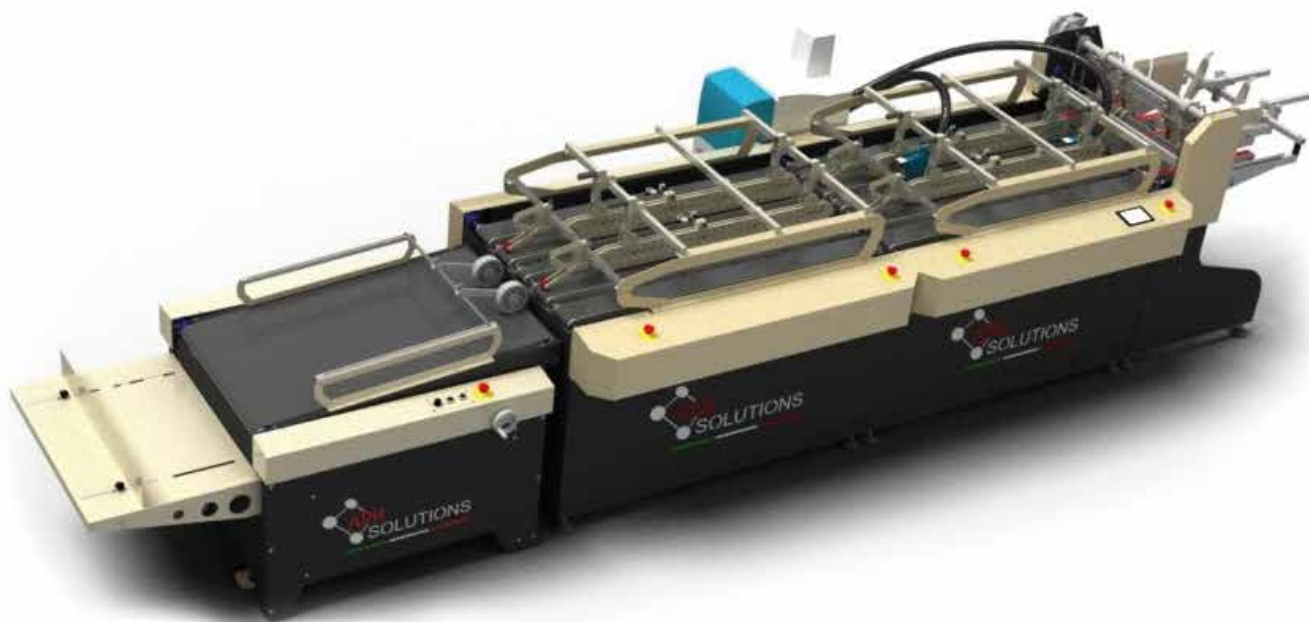
New construction machine, made in Italy, designed for the production of:

1. Straight-line boxes
2. Crash-lock bottom boxes
3. Folders with one or two pockets (optional on request - Tipper plate)
4. Envelopes and Folders with gussets, and presentation folders with large document pockets (optional on request - Tipper plate)
5. Covers for DVD envelopes with one or two pockets. (optional on request - Tipper plate)
6. Envelops form 12\*15 open size up to 70\*100 cm. (optional on request - Tipper plate)
7. Medical file envelopes, special size envelopes. (optional on request - Tipper plate)
8. Application of double-sided tape on blanket (Optional on Request - Rap)
9. Courier Envelopes (DHL, FedEx, TNT, etc.) with double-sided tape & tear tape (Optional on request-Rap Strip)
10. Machine ready to add inserter tape (Optional on request-Inserter)
- NEW** 11. Folders and envelopes with Capacity (Optional on request- 3D system)
- NEW** 12. Cold melt system (optional on request)
- NEW** 13. Possibility of contemporaneous vertical and horizontal gluing
- NEW** 14. Bar code reader (optional on request)
- NEW** 15. HP Inkjet (optional on request)
- NEW** 16. Braille alphabet reader (optional on request)


By adding the rotation units on request, many complex applications can be done in one step.

 **Macchina Box Plus 2 Standard**

 **Box Plus 2 Standard Machine**



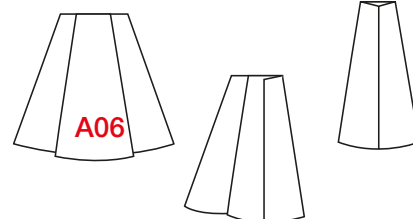
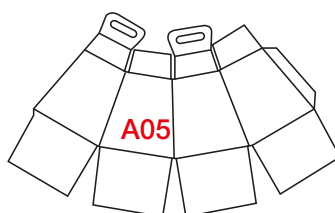
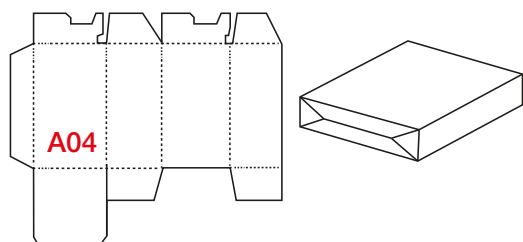
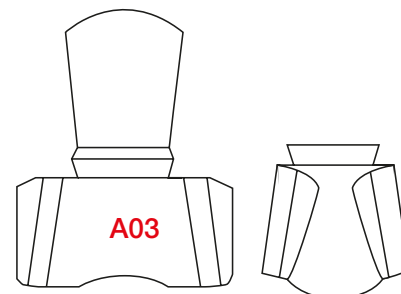
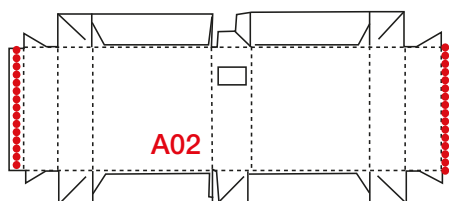
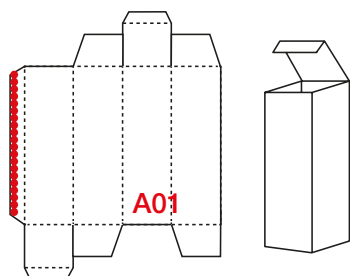
<b>Caratteristiche tecniche</b> 	
Formato di introduzione	Min 100 x 100 mm Max 700 x 1020 mm
Grammatura carta	Min 200 g/m <sup>2</sup> Max 600 g/m <sup>2</sup>

<b>Technical Characteristics</b> 	
Introduction format	Min 100 x 100 mm Max 700 x 1020 mm
Paper weight	Min 200 g/m <sup>2</sup> Max 600 g/m <sup>2</sup>

 **Prodotti realizzabili con la macchina Box Plus 2**

 **Products achievable with the Box Plus 2 machine**

Astucci Lineare i e a fondo automatico  
Linear and crash lock bottom boxes



 **Opzionali su richiesta**

 **Optionals on request**

## **Tipper Plate**

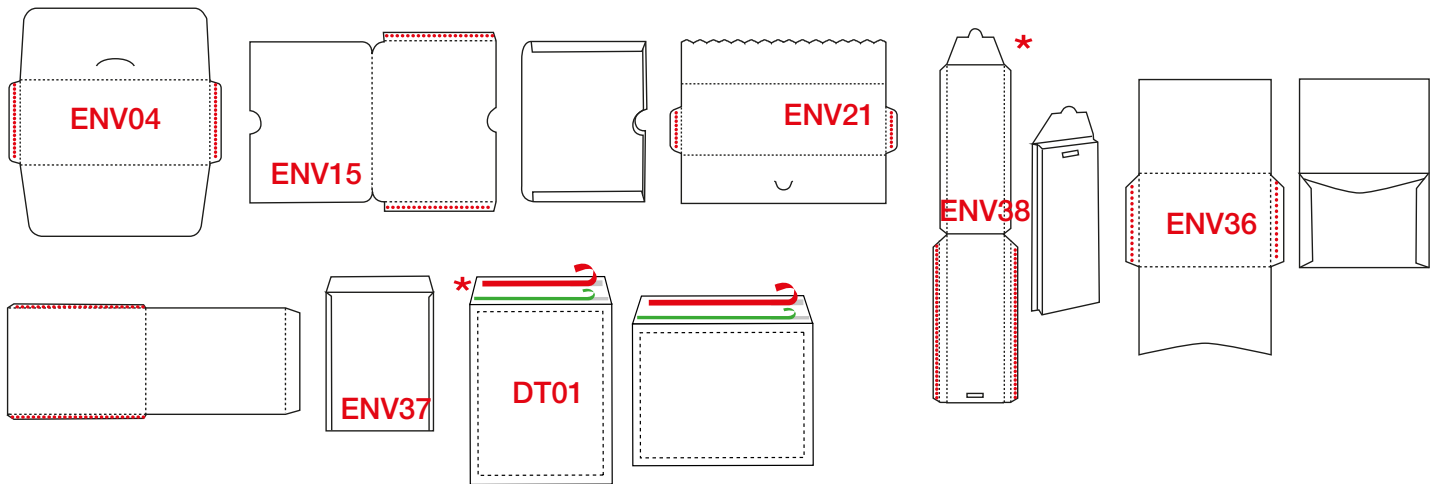
## **Tipper Plate**

Box Plus 2 è dotata di Tipper fold plate, un dispositivo di piega mobile e amovibile, provvisto di scanalature verticali, una lamiera ferma-prodotto orizzontale regolabile in altezza, e un soffiatore. Il Tipper fold plate è azionato attraverso un sistema elettro-pneumatico.

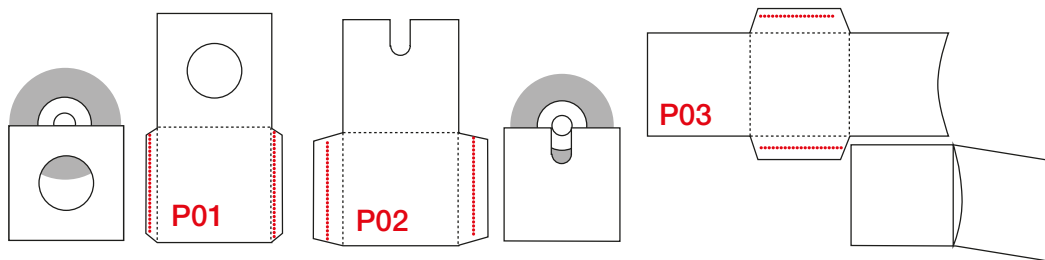
Box Plus 2 is equipped with a movable and detachable tipper fold plate, provided with vertical slots, an adjustable stop plate, and an air pressure blast. The tipper fold plate is operated by an electro-pneumatic system.



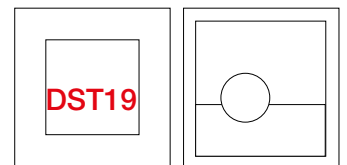
### Buste Envelopes



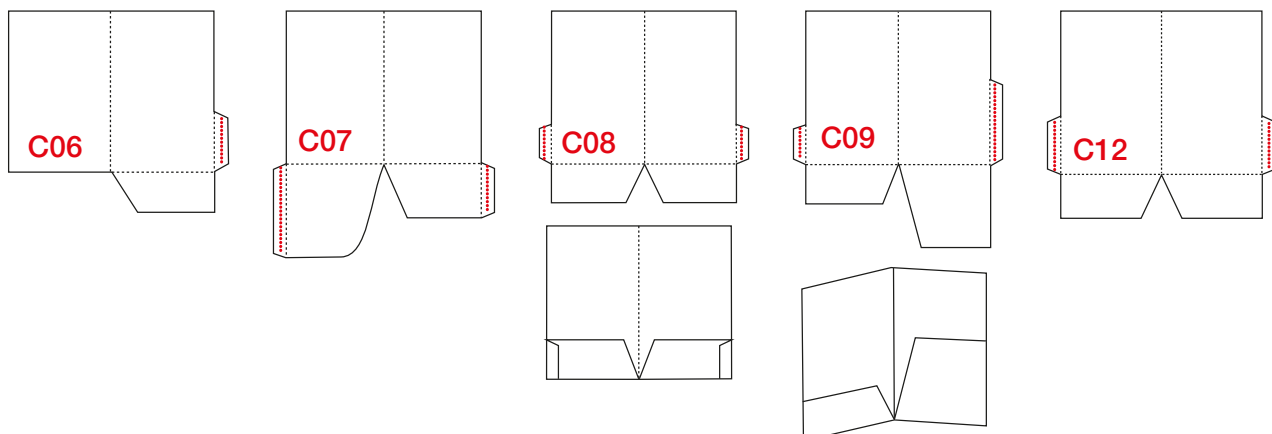
### Porta CD/DVD CD Envelopes

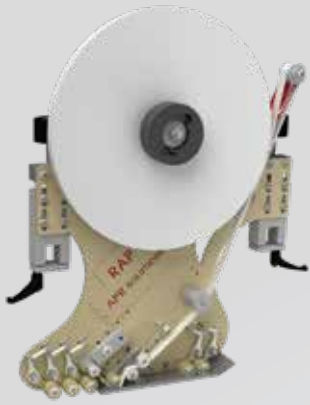


### \* Portaritratti per foto Picture frames





### Cartelline con tasche Folders with pockets



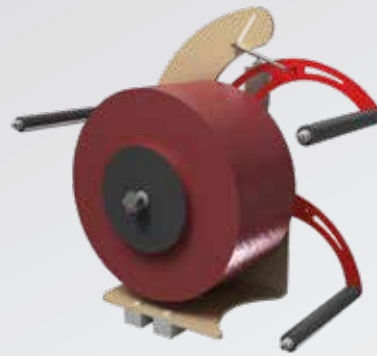


## RAP

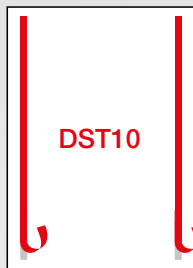
-  Applicatore nastro biadesivo "RAP"
-  *Applicator of double-sided tape "RAP"*

## RAP STRIP

-  Applicatore nastro a strappo "RAP STRIP"
-  *Applicator of tear tape "RAP STRIP"*



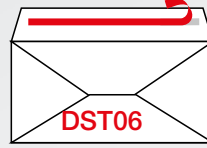
\*Poster  
*Posters*



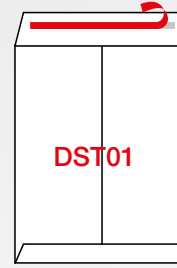
\*Campionari Tessuti  
*Tissue samples*



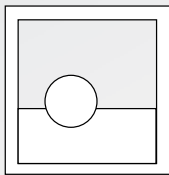
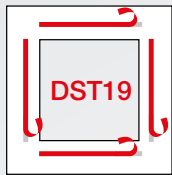
\*Buste  
*Envelopes*



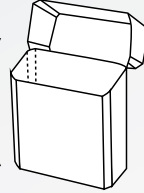
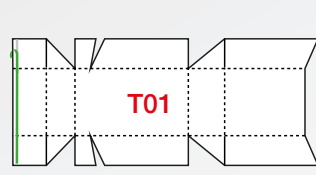
\*Sacchetti  
*Bags*



\*Portaritratti per foto  
*Picture frames*



Fustino detersivo con tear-tape  
*Detergent pail with tear-tape*



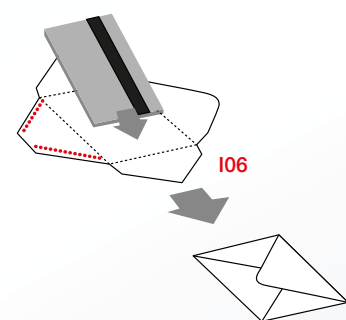
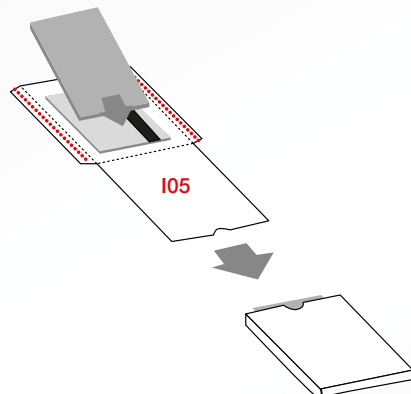
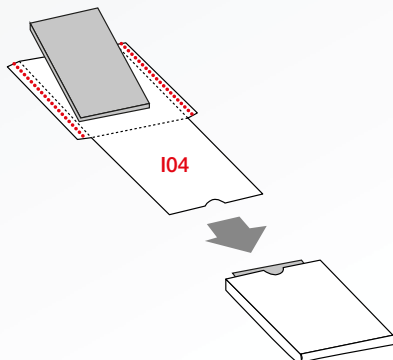
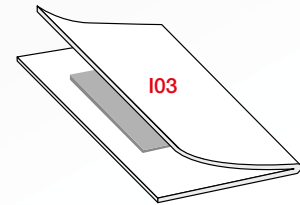
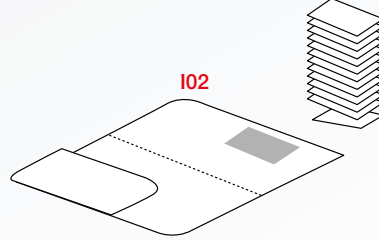
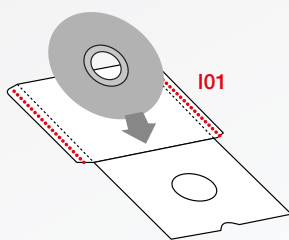
\*Prodotti realizzabili con  
gli opzionali su richiesta.  
*Products achievable  
with the optionals on request*

## INserter

**FEEDER AUTOMATICO**, per l'alimentazione di pieghevoli farmaceutici, libretti, prodotti in bustina, depliant, cartoncini ecc ... da inserire in linee di produzione e confezionamento.

## INserter

**AUTOMATIC INSERTER**, inserting a large variety of products like brochure, book notes, plastic products like cards, and so on, that can be added on any of our automatic machines.



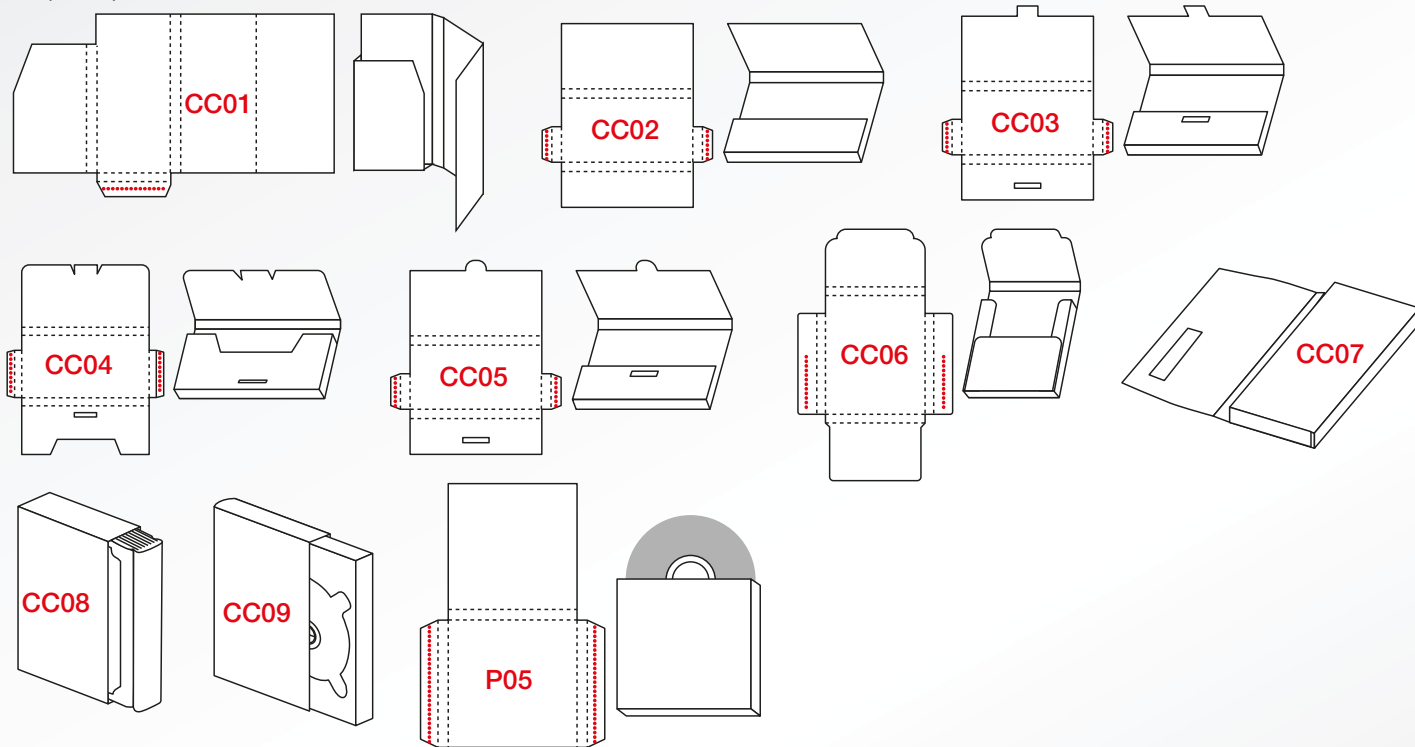
## SISTEMA 3D

Sistema speciale capace di convertire la piega bi-dimensionale in una piega tri-dimensionale, permettendo la produzione di cartelline di presentazione, buste, etc. con dorso. Capacità dispositivo di piega: tra 5 e 25 mm.

## 3D SYSTEM

Special forming system able to convert the flat bi-dimensional folding to capacity tri-dimensional folding, enabling to produce presentation folder, envelopes, etc with capacity/spine. Capacity forming device: from 5 to 25 mm.

\*Cartelline con dorso  
Capacity folders



Con riserva di variazioni tecniche. Non ci assumiamo responsabilità per eventuali errori di stampa e dati mancanti o inesatti.  
We reserve the right to make technical changes at any time. We are not responsible for any printing errors and missing or incorrect data.



**APR** Solutions srl

Via Aldo Moro, 10 • 10030 Rondissone TO - Italy

Tel: +39 011 5504469 • Fax: +39 011 5504461

Email: [info@aprsolutions.com](mailto:info@aprsolutions.com) • Sito: [www.aprsolutions.com](http://www.aprsolutions.com)