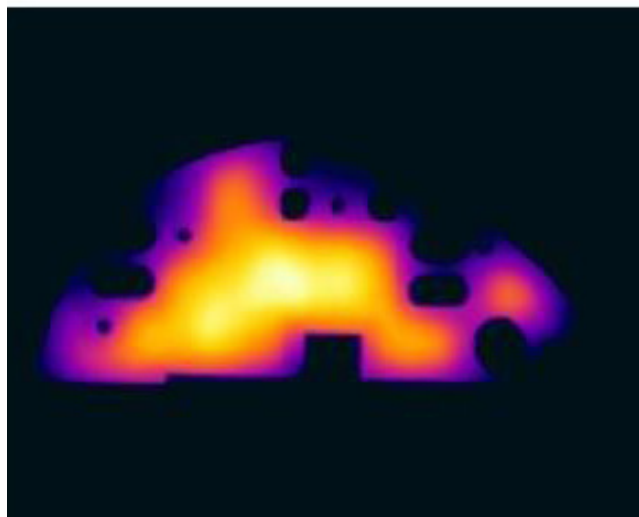
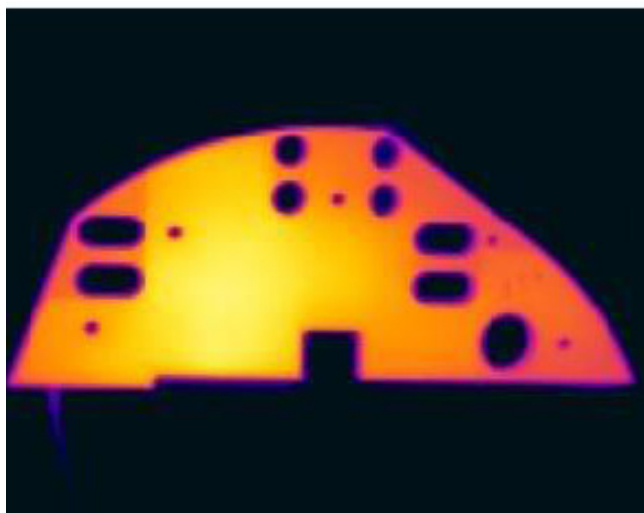


TECHNICAL COMPARISON

TOOL HEATERS



GROUP OF COMPANIES



IHNE & TESCH
ELEKTRO-WÄRMETECHNIK

KELLER IHNE + TESCH
ELEKTRO-WÄRMETECHNIK

CELTIC

KIT ELECTROHEAT

TOOL HEATERS

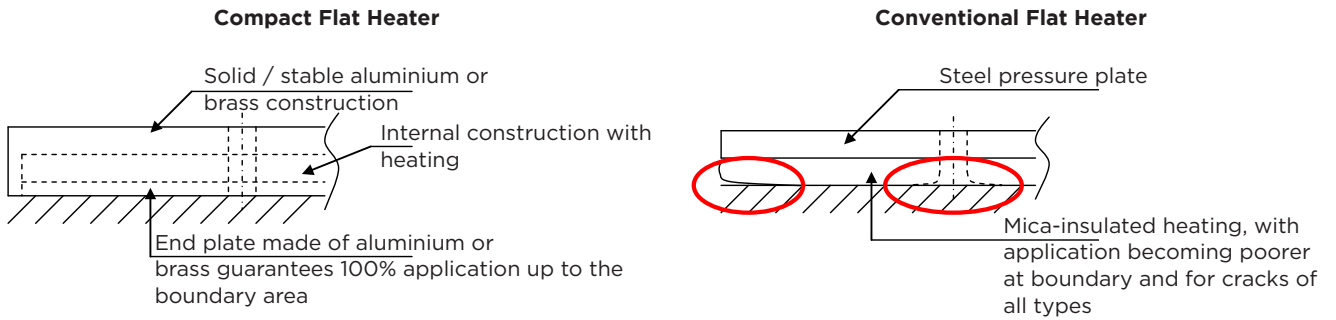
TECHNICAL COMPARISON

Comparison of the heat distribution of aluminium/brass compact Band Heaters with conventional Flat Heaters in sandwich construction.

Technical data:

	FAK	FMK	BD
maximum operating	450 °C	550 °C	280 °C
maximum power density	3.5-5 W/cm ²	3.5-5 W/cm ²	3.5 W/cm ²

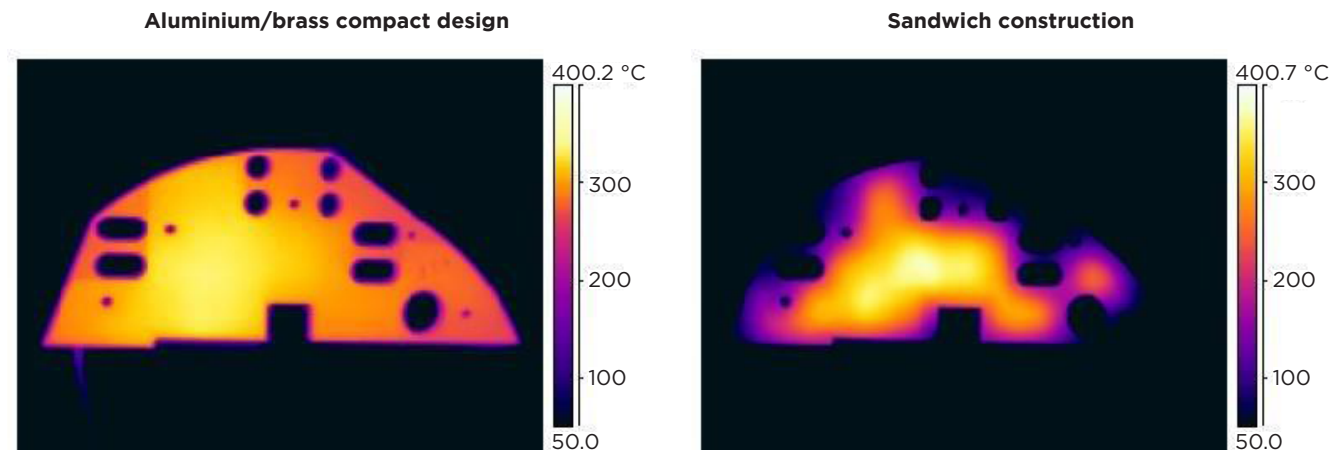
Construction:



Application-related benefits due to precise shape of the compact aluminium/brass Flat Heater compared to conventional sandwich construction.

Heat distribution:

Thermal images and temperature course demonstrate the benefits of the compact aluminium/brass Flat Heater compared to existing conventional sandwich construction, i.e. mica-isolated heating with iron pressure plate end, for heat distribution.



subject to technical change



IHNE & TESCH
ELEKTRO-WÄRMETECHNIK

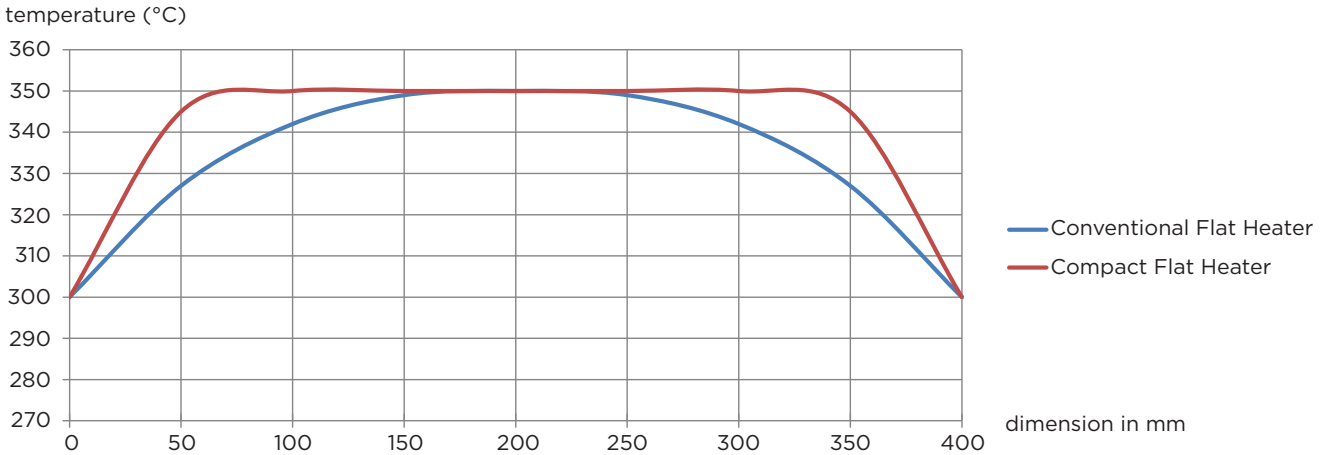
KELLER IHNE + TESCH
ELEKTRO-WÄRMETECHNIK

CELTIC

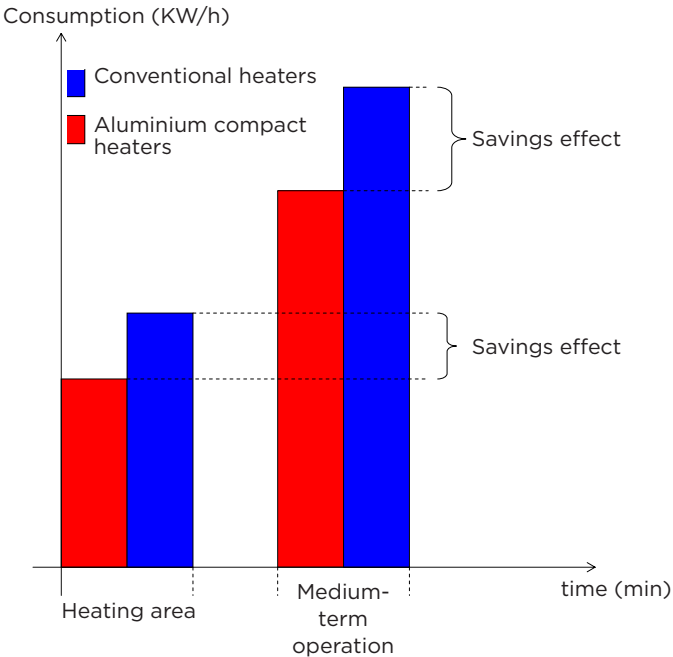
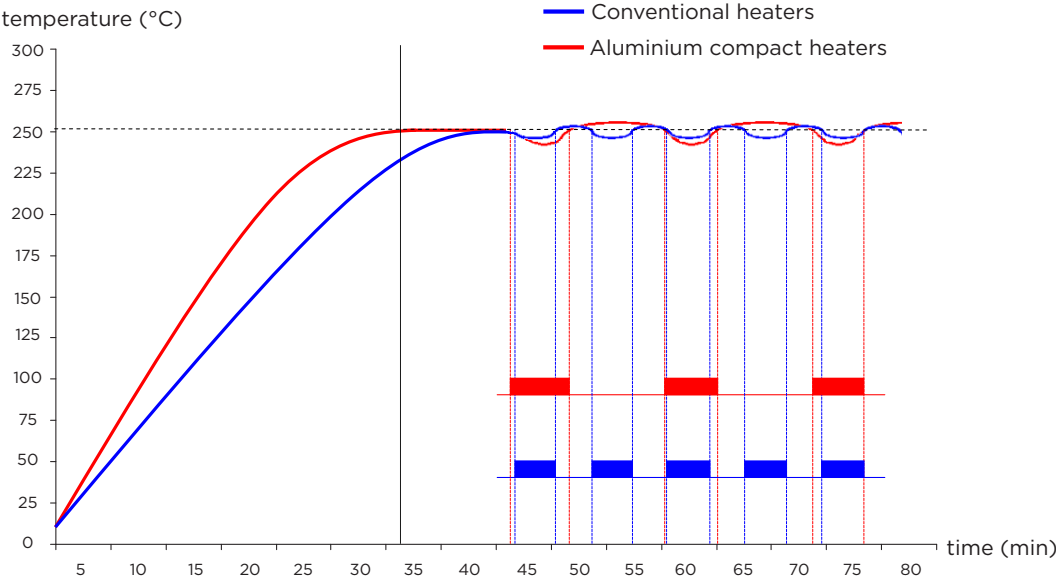
KIT ELECTROHEAT

www.electricalheat.com

Heat distribution BD / FAK:



Savings potential:



The advantages from the construction of the heater and application advantages result in significantly higher efficiency compared to conventional Flat Heaters. Better heat conduction and distribution as well as greater heat-storage capacity ensure quick heating up to the desired temperature and less in-operation periods when balancing the heat, which leads to lower consumption values. Summing up the benefits, there is an energy-savings potential of up to 30% of conventional consumption values.

subject to technical change



Locations



GERMANY

Ihne & Tesch GmbH
Am Drostenstueck 18
D-58507 Luedenscheid
P.O. Box 1863
D-58468 Luedenscheid

Phone: +49 2351 666 0
Fax: +49 2351 666 24
info@itlmail.de

Ihne & Tesch GmbH
Aalener Straße 42
D-90441 Nuremberg
P.O. Box 710143
D-90238 Nuremberg

Phone: +49 911 96678 0
Fax: +49 911 6266430
info@itnmail.de

www.elektroaermetechnik.de

Keller, Ihne & Tesch KG
Kunigundenstraße 13
D-68623 Lampertheim
P.O. Box 5164
D-68612 Lampertheim

Phone: +49 6241 98808 0
Fax: +49 6241 80056
info@kitmail.de

www.elektroaermetechnik.de



AUSTRIA

Keller, Ihne & Tesch GmbH
Bahnhofstraße 90
A-3350 Haag

Phone: +43 7434 43880
Fax: +43 7434 43883
info@kitmail.at

www.elektroaermetechnik.at

FRANCE

Celtic S.A.R.L.
2/4 Rue René Cassin
ZAC La Villette-aux-Aulnes
F-77290 Mitry-Mory

Téléphone: +33 160 21 21 80
Téléfax: +33 160 21 21 81
info@celtic.fr

www.celtic.fr

GREAT BRITAIN

KIT Electroheat Ltd.
Office F10
Mexborough Business Centre
College Rd
GB-S64 9JP Mexborough

Phone: +44 1443 442 176
Fax: +44 1443 441 861
mail@kitelectroheat.co.uk

www.kitelectroheat.co.uk