

Packaging solutions

In reduced development time

A library of software modules
based on international standards



Common program modules for small machines to full lines reduces the maintenance burden



Proven function blocks and templates mean faster time to market



Based on recognised international standards such as PackML & PLC Open

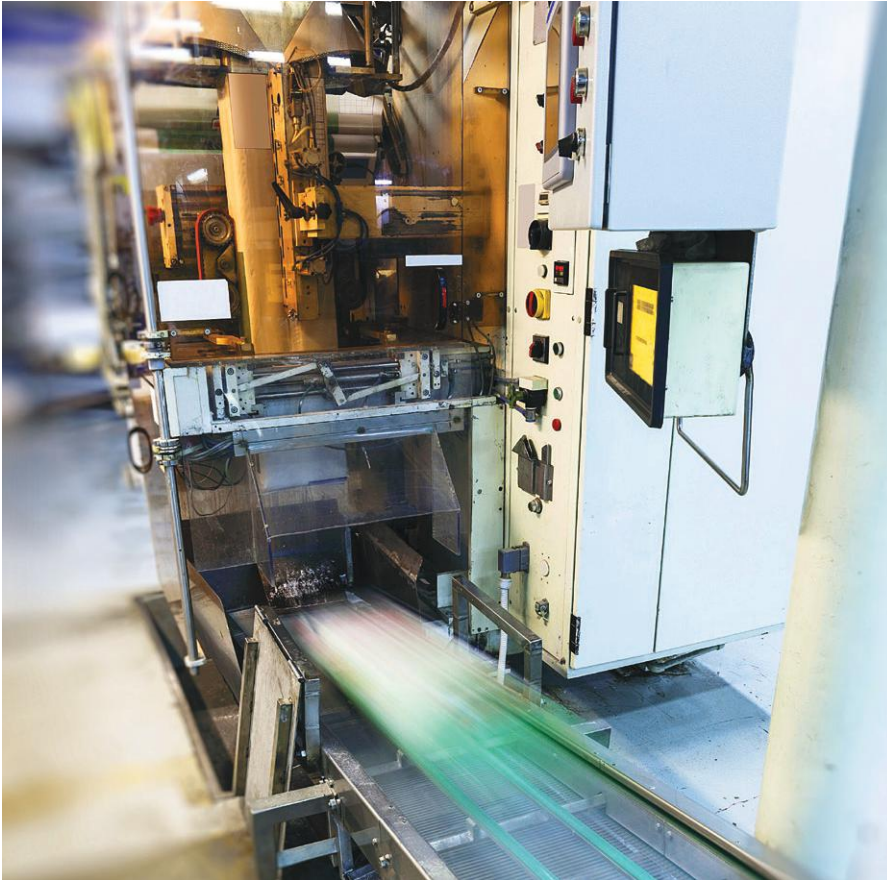


Utilise e-F@ctory Alliance partners to create best in class solutions



Scan the QR code to
see the virtual demo

Quality and speed for packaging



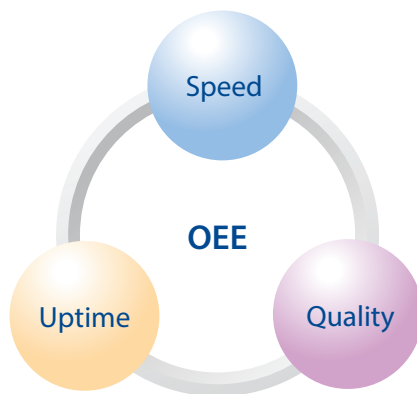
Other partners can provide sensors and actuators, vision and energy management, condition monitoring and network communications, OEE management, quality control, maintenance planning, etc.

Mitsubishi has integrated into its controllers special open interfaces for packaging applications, such as the Weihenstephan Protocol and PackML. This enables easy communication between various packaging machines and/or lines and also allows plug and play connection with higher level control networks such as MES (manufacturing execution systems) and ERP (enterprise resource planning), so that production planning and quality assurance become integral functions. Productivity, reliability and cost management are therefore guaranteed.

With energy prices rising and carbon emissions coming under increasing scrutiny, sustainable production is becoming more and more important. All appropriate Mitsubishi automation devices control their own energy consumption, often using advanced recovery, regeneration and peak load management techniques.

e-F@ctory partners such as IBM, SAP and Oracle provide seamless integration into enterprise-wide IT systems and secure internet connection for full shopfloor to top floor management and future-proofing.

The result is the best possible technical solution, on time and in budget.



OEE surrounded by Uptime, Speed Quality

Designing and building packaging machines, from initial concept ideas to final acceptance testing, is a long and demanding process. Support through every stage can be provided by Mitsubishi Electric and our e-F@ctory Alliance partners, who will help to develop an optimal solution for each step, culminating in a best in class final design.

Each e-F@ctory partner has unique mastery and expertise in a particular field, and they regularly work together to deliver the best possible skill set for any given project.

For instance, CAD (computer-aided design) can be provided by e-F@ctory partner EPLAN or others. This may be followed by simulations with Emulate 3D or Visual Components. The control system may then be built using Mitsubishi's iQ Platform suite of hardware, software and tools.



Mitsubishi Electric iQ Platform, the base for success

For realisation of your machine

Flexible solutions

All your packaging ideas could be achieved using the iQ Platform from Mitsubishi Electric. Its wide range of built-in PLCs, motion and servo systems enable you to create your perfect machine solution.

The iQ's integrated engineering tools and the intelligent functions, such as the one touch auto tuning of the servos, enable a faster time to market to be attained.

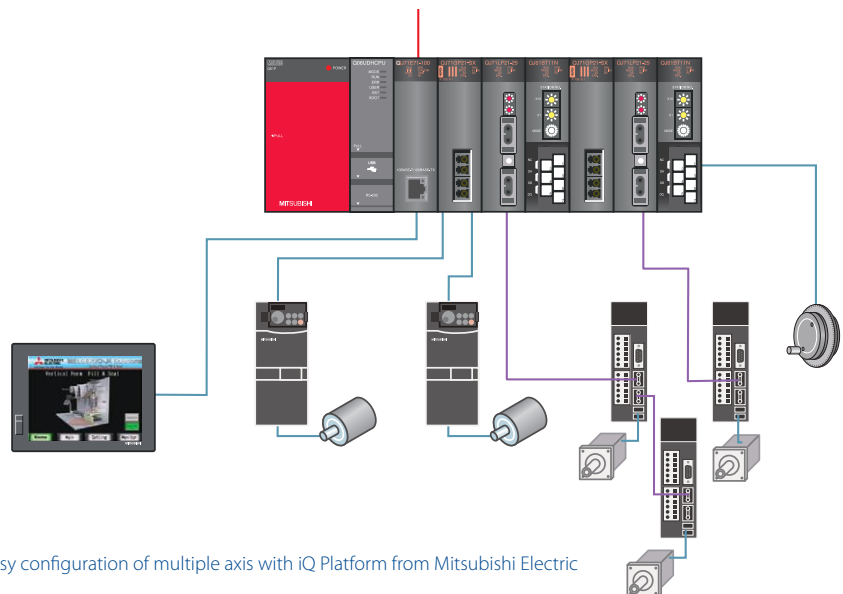
OMAC Pack ML

The PackML standard, produced by industry organisation OMAC, provides a structured approach for developing both small packaging machines and huge packaging lines. It uses state models and defined programming architecture to help users create their machines faster. iQ is able to provide automatic PackML program generation from a configuration sheet. Together with the HMI and Function Block templates you can easily and quickly design your solution.

Packaging solution library

Pre-defined HMI templates and ready-made application function blocks help you to configure your solution quickly. Select the appropriate templates and blocks from the built-in standard library and your packaging line will be set-up with a tested solution, based on the PLC Open standard.

ERP MES Databases



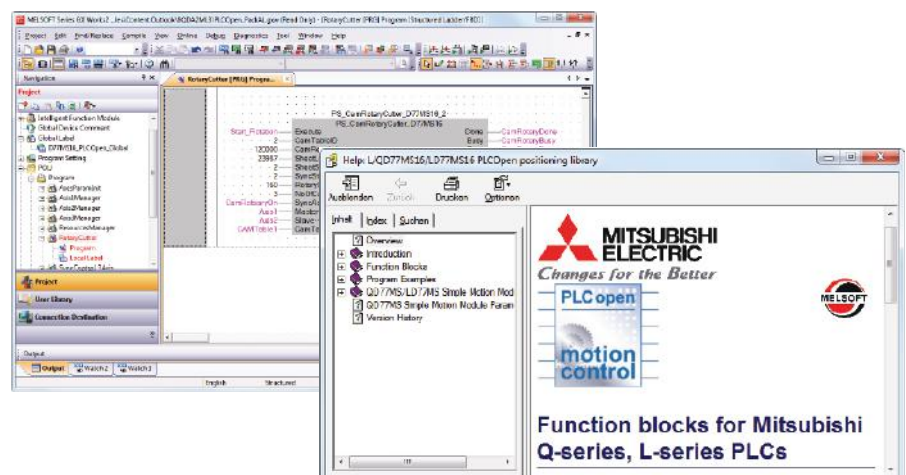
Easy configuration of multiple axis with iQ Platform from Mitsubishi Electric

Solution guide

The integrated help functions, based on many years experience of hardware and software issues, provide all necessary information from wiring to configuration of the solution. Experienced packaging engineers have designed and tested the functions for you.

Advantages

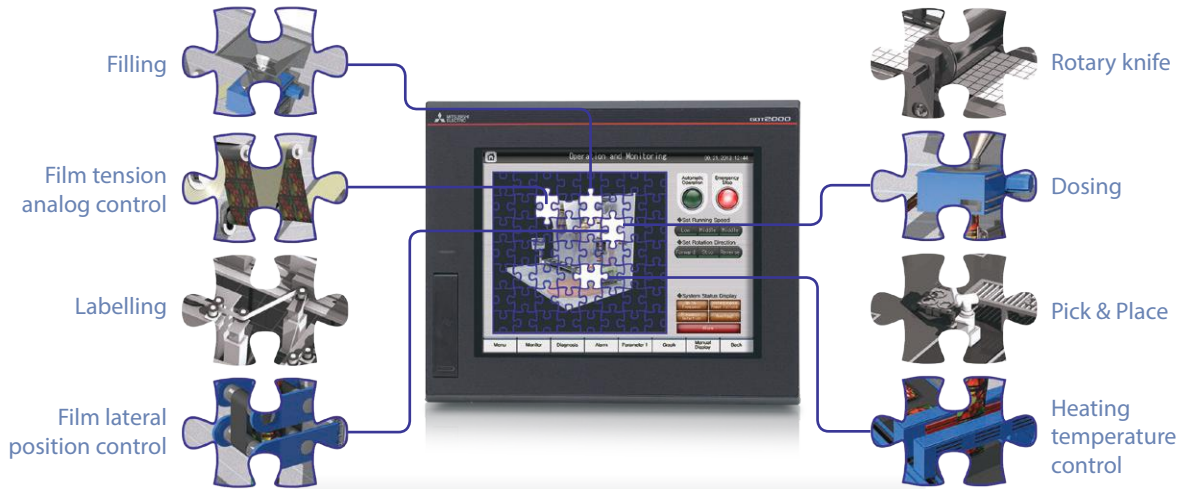
- Fast development of your machine
- Guaranteed functionality based on tested functions and automatically generated PLC code
- Data consistency from CAD to acceptance test
- Easy to realise communications with high level enterprise management systems
- Pre-defined solutions based on common hardware and software from Mitsubishi Electric



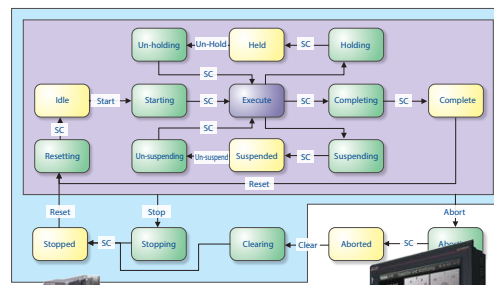
HMI templates and Function Blocks

Packaging solution

Solve your machine design problem by simply selecting the relevant templates/function blocks from our library.



Standards
Function block
HMI template
Help file



Problem solved! Your final packaging machine solution.

European Branches

Mitsubishi Electric Europe B.V. Gothaer Straße 8 D-40880 Ratingen Phone: +49 (0)2102 / 486-0	Germany
Mitsubishi Electric Europe B.V.-org.sl. Radlická 751/113e CZ-158 00 Praha 5 Phone: +420-251 551 470	Czech Rep.
Mitsubishi Electric Europe B.V. 25, Boulevard des Bouvets F-92741 Nanterre Cedex Phone: +33 (0)1 / 55 68 55 68	France
Mitsubishi Electric Europe B.V. Viale Colonnari 7 I-20864 Agrate Brianza (MB) Phone: +39 039 / 60 53 1	Italy
Mitsubishi Electric Europe B.V. Krajkowska 50 PL-32-083 Balice Phone: +48 (0)12 / 630 47 00	Poland
Mitsubishi Electric Europe B.V. S2, bld. 3 Kosmodamianskaya nab 8 floor RU-115054 Moscow Phone: +7 495 / 721 2070	Russia
Mitsubishi Electric Europe B.V. Ctra. de Rubí 76-80 E-08190 Sant Cugat del Valles (Barcelona) Phone: 902 131121 // +34 935653131	Spain
Mitsubishi Electric Europe B.V. Travellers Lane UK-Hatfield, Herts. AL10 8XB Phone: +44 (0)1707 / 28 87 80	UK

Representatives

GEVA Wiener Straße 89 AT-2500 Baden Phone: +43 (0)2252 / 85 55 20	Austria	Beijer Electronics A/S Lykkagårdsvej 17 DK-4000 Roskilde Phone: +45 (0)46 / 75 76 66	Denmark	Beijer Electronics UAB Gostautų g. 3 LT-48324 Kaunas Phone: +370 37 262707	Lithuania	Beijer Electronics AS Postboks 487 NO-3002 Drammen Phone: +47 (0)32 / 24 30 00	Norway	INEA RBT d.o.o. Stegne 11 SI-1000 Ljubljana Phone: +386 (0)1 / 513 8116	Slovenia	I.C. SYSTEMS Ltd. 23 Al-Saad-Al-Alee St. EG-Sarayat, Maadi, Cairo Phone: +20 (0) 2 / 235 98 548	Egypt
TECHNIKON Otkrytskaya 19, Off. 705 BY-220030 Minsk Phone: +375 (0)17 / 210 46 26	Belarus	Beijer Electronics Eesti OÜ Pärnu mnt. 160B EE-11317 Tallinn Phone: +372 (0)6 / 51 81 40	Estonia	ALFA TRADE Ltd. 99, Paola Hill Malta-Paola PLA 1702 Phone: +356 (0)21 / 697 816	Malta	Fonseca S.A. R. João Francisco do Casal 87/89 PT-3801-997 Aveiro, Esigueira Phone: +351 (0)234 / 303 900	Portugal	Beijer Electronics Automation AB Box 426 SE-20124 Malmö Phone: +46 (0)40 / 35 86 00	Sweden	ILAN & GAVISH Ltd. 24 Shenkar St., Kiryat Arie IL-49001 Petah-Tiqva Phone: +972 (0)3 / 922 18 24	Israel
ESCO DRIVES Culliganlaan 3 BE-1831 Diegem Phone: +32 (0)2 / 717 64 60	Belgium	Beijer Electronics OY Vanha Nurmijärventie 62 FIN-01670 Vantaa Phone: +358 (0)207 / 463 500	Finland	INTEHSIS SRL bld. Traian 23/1 MD-2060 Kishinev Phone: +373 (0)22 / 66 4242	Moldova	Sirius Trading & Services Aleea Lacul Morii Nr. 3 RO-060841 Bucuresti, Sector 6 Phone: +40 (0)21 / 430 40 06	Romania	OMNI RAY AG Im Schöhl 5 CH-8600 Dübendorf Phone: +41 (0)44 / 802 28 80	Switzerland	GRIT CELADON Ltd. 12 Ffajmanut Street IL-42505 Netanya Phone: +972 (0)9 / 863 39 80	Israel
KONING & HARTMAN B.V. Woluwelaan 31 BE-1800 Vilvoorde Phone: +32 (0)2 / 257 02 40	Belgium	PROVENDOR OY Teljinkatu 8 A3 FIN-28130 Pori Phone: +358 (0)1 / 522 3300	Finland	HIFLEX AUTOM. B.V. Wolweverstraat 22 NL-2984 CD Ridderkerk Phone: +31 (0)180 / 46 60 04	Netherlands	INEA SR Izletnicka 10 SER-113000 Smederevo Phone: +381 (0)26 / 615 401	Netherlands	Serbia Fabrika Otomasyonu Merkezi Seriifali Mahallesi Nutuk Sokak No:5 TR-34775 Ümraniye-İSTANBUL Phone: +90 (0)216 526 39 90	Turkey	CEG LIBAN Cebaco Center/Block A Autostrade DORA Lebanon-Beirut Phone: +961 (0)1 / 240 445	Lebanon
INEA RBT d.o.o. Stegne 11 SI-1000 Ljubljana Phone: +386 (0)1 / 513 8116	Bosnia and Herzeg.	UTEKO A.B.E.E. S. Mavrogenous Str. GR-18542 Piraeus Phone: +30 211 / 1206 900	Greece	KONING & HARTMAN B.V. Haarlerbergweg 21-23 NL-1101 CH Amsterdam Phone: +31 (0)20 / 587 76 00	Netherlands	SIMAP s.r.o. Jána Derku 1671 SK-911 01 Trenčín Phone: +421 (0)32 743 04 72	Netherlands	Slovakia CSC AUTOMATION Ltd. 4-B, M. Raskovoyi St. UA-02660 Kiev Phone: +380 (0)44 / 494 33 55	Ukraine	ADROIT TECHNOLOGIES 20 Waterford Office Park 189 Witkoppen Road ZA-Fourways Phone: +27 (0)11 / 658 8100	South Africa
AKHNATON 4, Andreev Lipchev Blvd., PO Box 21 BG-1756 Sofia Phone: +359 (0)2 / 817 6000	Bulgaria	MELTRADE Ltd. Fertő utca 14. HU-1107 Budapest Phone: +36 (0)1 / 931 9726	Hungary								
INEA CR Lošnjiska 4 a HR-10000 Zagreb Phone: +385 (0)1 / 36 940 - 01 / -02 / -03	Croatia	T00 Kazpromavtomatika III. Zhambilya 28 KAZ-100017 Karaganda Phone: +7 7212 / 50 10 00	Kazakhstan								
AUTOCONT C.S. S.R.O. Kačkova 1853/3 CZ-702 00 Ostrava 2 Phone: +420 595 691 150	Czech Republic	Beijer Electronics SIA Ritasmias iela 23 LV-1058 Riga Phone: +371 (0)6 / 784 2280	Latvia								



Version check

Mitsubishi Electric Europe B.V. / FA - European Business Group / Gothaer Straße 8 / D-40880 Ratingen / Germany / Tel.: +49(0)2102-4860 / Fax: +49(0)2102-4861120 / info@mitsubishi-automation.com / eu3a.mitsubishielectric.com

Art. no. ?????? / 04.2013 / Specifications subject to change / All trademarks and copyrights acknowledged.

