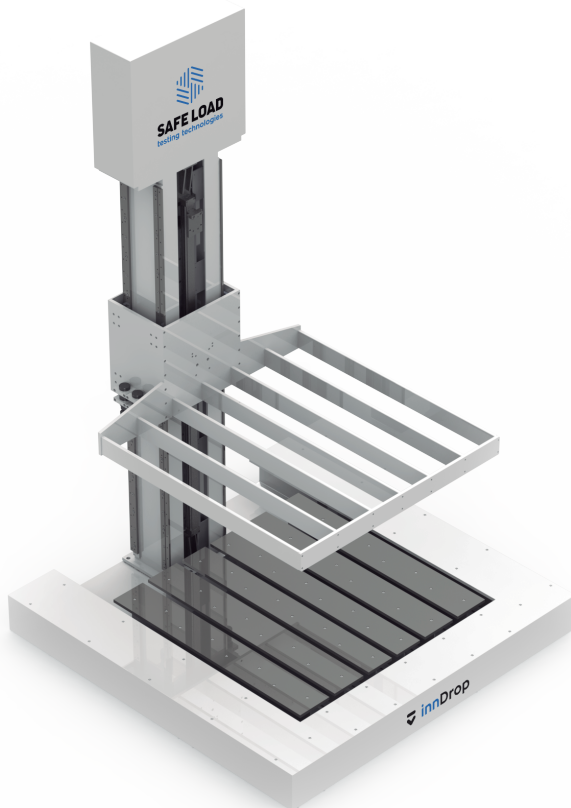


## innDrop

### DROP TESTER

Performs the drop simulations, both vertical and rotational impacts, that affect packages and products during handling and distribution. The innDrop family includes different models depending on the package size and weight, and they are designed to simulate flat, edge or corner drops.



### DROP TESTS SUPPORTED

#### > EN 15552:2009

Packaging: Complete, filled transport packages and unit loads.  
Performance testing schedules for common distribution chains.

> **ASTM D4169-16** Standard practice for performance testing of shipping containers and systems.

#### > **ASTM D7386-16**

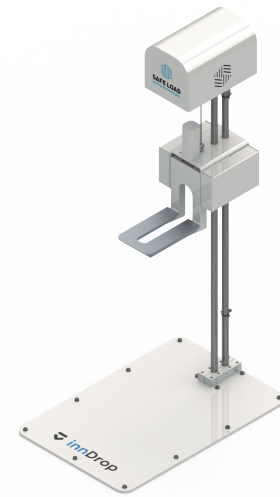
Standard practice for performance testing of packages for single parcel delivery systems.

#### > **ISTA** Procedures

1A, B, C, D, G, H; 2A, B, C; 3A, B, F; K; 4 Series; 6-FEDEX; 6-SAMSCLUB, 6-AMAZON.COM

## Technical specifications:

- > Electric machine
- > 2 different designs depending packaging size
- > Drop height up to 2 m
- > Maximum load up 1,200 kg
- > Steel impact surface
- > Drop orientation control possibility
- > Intuitive controller
- > Touch screen controller
- > Drop shock data acquisition system (optional)



## DROP TESTER SERIES

Model	Max. Testing Weight (kg)	Max. Drop Height (mm)	Max. Packaging Size (mm)	Applications
<b>SF-DP1200</b>	1200	2000	1500	Flat Drop - Edge & Corner
<b>SF-DP600</b>	600	1200	1000	Flat Drop - Edge & Corner
<b>SF-DP200</b>	200	1200	800	Flat Drop - Edge & Corner
<b>SF-DP100</b>	100	1200	800	Flat Drop - Edge & Corner Drop - Drop on Hazards
<b>SF-DP50</b>	50	1200	600	Flat Drop - Edge & Corner Drop - Drop on Hazards

\*Different load weights or drop height under request.

All our solutions comply with the security standards to guarantee the CE Mark.  
If you are interested in getting a custom solution, please do not hesitate to contact us.

[www.safeloadtesting.com](http://www.safeloadtesting.com)

**TESTING EQUIPMENT | CONSULTANCY | TRAINING | AFTER-SALES SERVICES**

NOTE: Safe Load Testing Technologies reserves the right to modify these specifications at any time without notice due to continuous product innovation.