

Smart factory automation on bottling and packaging lines is a crucial factor to ensure efficient, eco-friendly and functional production processes.

Starting with these premises, [SMI](#) has developed the new **EASY-CAP** system, a gravitational cap-picking system which takes the caps from the hopper and keeps them in the correct position until they reach the **ECOBLOC® ERGON** integrated system for blowing, filling and capping PET bottles.



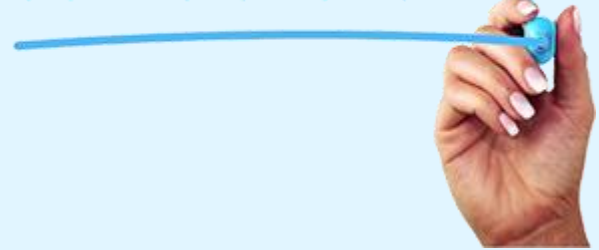
Discover SMI easy-cap system!

BENEFITS



- the **EASY-CAP system** is made up of a motorized hopper for the loading of the loose caps, an elevated conveyor for handling the caps and a cap outfeed discharger that is fitted to the cap channel;
- the **conveyor belt** is equipped with specific bars transporting only the caps which are in the correct place and direction;
- the **gravitational cap-picking system** is equipped with special guides that keep the caps in the correct position and carry them towards the single lane outfeed channel, placed at the height which most suits the user needs

SPECIFICATION



- **compact structure**, made from AISI 304 steel, suitable for any layout solution;
- **fluid and linear functioning**, transporting only properly oriented caps (those with the hollow part placed on the belt fall back into the hopper through gravity);
- **system suitable to different kinds of plastic caps**;
- **user-friendly interface**, allowing the operator to use the machine easily and efficiently.

To have further information contact our sales department or visit our website
Marketing Department
SMI S.p.A.
E-mail: info@smigroup.it