



**Trays that become trays again**



# tray2tray

*by SP Group*

## Index

	PAGE
<b>THE CIRCULAR ECONOMY, A NECESSARY CHANGE</b>	3
· What is the circular economy?	4
<b>LEADING CHANGE</b>	5
· What is Tray2tray?	6
· How does Tray2tray work?	6
· What are the advantages of Tray2tray?	8
<b>ECOSENSE CERTIFICATE</b>	9
· What is the ecosense certificate?	9
· How can we get the certificate? It's very easy with SP Group.	10



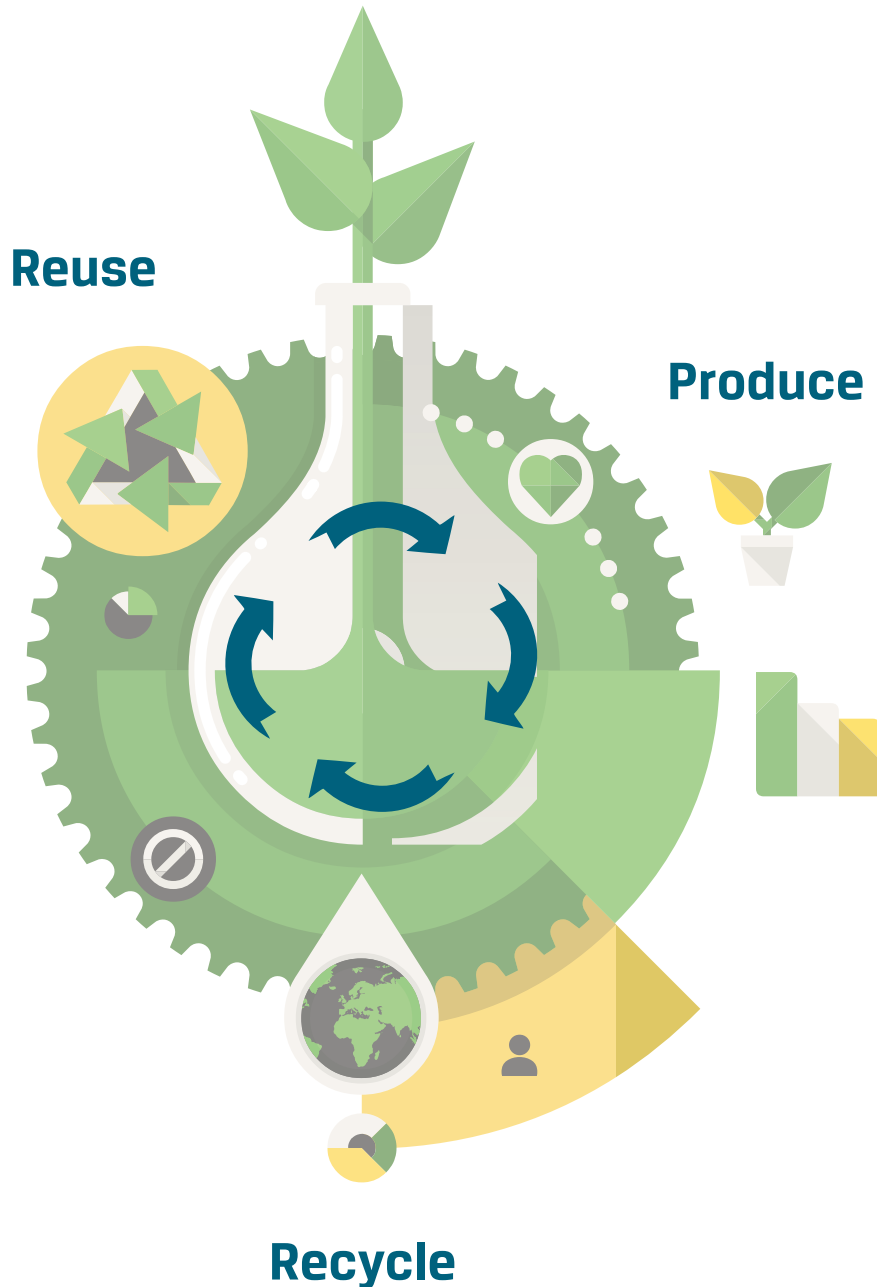
## A NECESSARY CHANGE

World production of plastic has increased twentyfold in the last 50 years. **25 million tonnes of plastic waste** is produced every year, and **less than 30% is recycled**. The remaining 70% ends up in landfill and, above all, the sea. 85% of the waste found on the beaches around the world is plastic, according to figures published by the European Commission.

For this reason, in 2018 the European Commission began its first-ever **European Strategy on Plastics** with the aim of reducing single-use plastics (cutlery, cups, supermarket bags, straws), restricting microplastics (oxo-biodegradable plastics and oxo-degradable plastics) and guaranteeing that **all polymeric materials that are sold in European countries will be recyclable by 2030**.

The aim is not only to reduce waste and increase recycling, but also to shift the production of plastics from a linear model to a circular one. This, in turn, leads to an increase in employment and innovation. This new strategy on plastics will re-establish how plastics are designed, used and recycled in the European Union.

# WHAT IS THE CIRCULAR ECONOMY?



The economy has always followed a linear model: a good is produced, used and disposed of. This model, which has worked well for years, is starting to become obsolete due to the exponential increase in production and the resulting increase in the use of natural resources – resources which are **limited**.

Now is the time to shift to a **circular model**. The objective of this model is to make better use of the resources by providing **materials with a second life** in order to avoid wasting anything during the manufacturing cycle: materials are recycled and used to produce new products. In short, the **circular economy** ensures materials that cannot be returned to the environment are reused.

The companies that have put this system into practice are seeing that reusing resources is more profitable than producing them from scratch.

**In anticipation of this regulation, SP GROUP** began its **TRAY2TRAY** project two years ago. This project offers clients the opportunity to form an active part of the **circular economy**, while contributing to improving the economic results of waste management.

## WHAT IS TRAY2TRAY?

**Tray2Tray** was created within **SP Group's Corporate Social Responsibility action framework**. With this Circular Economy project, we seek to turn waste materials into **second-generation raw materials**. Specifically it is based on the recycling and reuse of all the **APET and APET PE** rigid laminate, with or without a barrier, so that it can form part of new trays or other types of packaging.

The materials that are recycled and separated for their later reuse are those that come from:

- Excess plastic from the SP Group manufacturing process.
- The defective plastic from SP Group laminate.
- The sub-product resulting from the packaging process of the food manufacturers.



# HOW DOES TRAY2TRAY WORK?

**Tray2Tray is a closed process in which we take care of everything, it's that simple.**



**SP Group** provides you with the reels at your manufacturing plant so you can thermoform the film and package your products.

All you need to do is **collect the tray remnants and waste** resulting from the production process and put them in **a waste press** that we will provide free of charge.

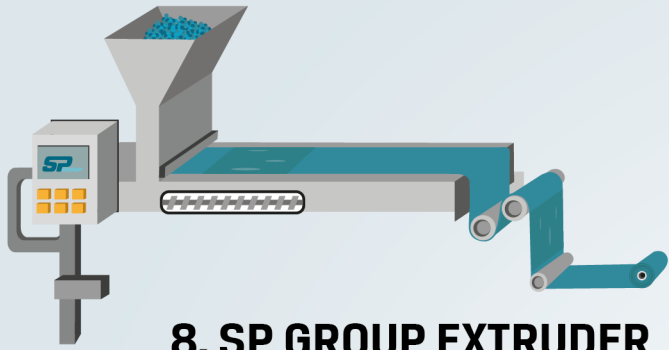
You then put together 3-bale pallets ready for loading and once **you have 30 pallets** you send us an email so that we can take the load away.

**Ferrovial**, a waste management company will remove the materials **at no cost to you** and take them to an authorised waste management plant.

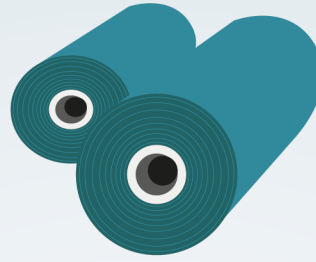
There they will **separate the materials and return them to SP Group** as clean flakes. All this is performed using a traceability system that guarantees the origin of the material is known at all times.

Once we have the flakes at our factory, we return them to the manufacturing chain by means of the extrusion process, so that they return to your facilities in the form of **new reels**. This way we are able to **close the circle**, turning your waste from the manufacturing process into your new trays.

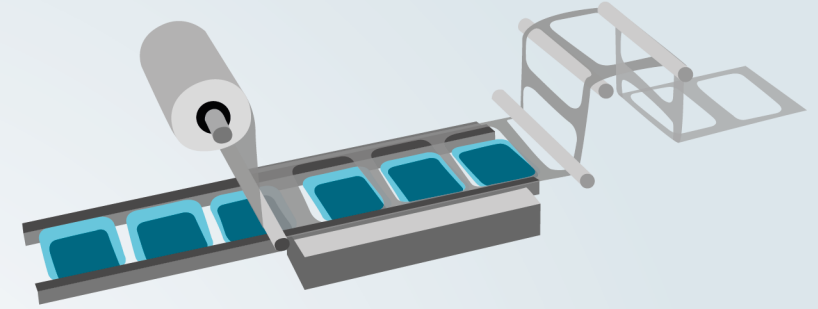




**8. SP GROUP EXTRUDER**

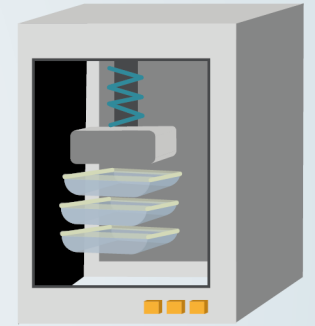
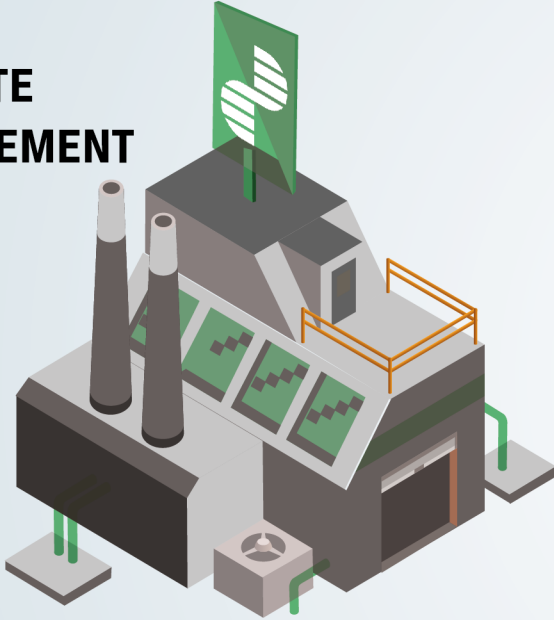


**1. SP GROUP REEL**



**2. PACKAGING MACHINE**

**7. WASTE  
MANAGEMENT  
PLANT**

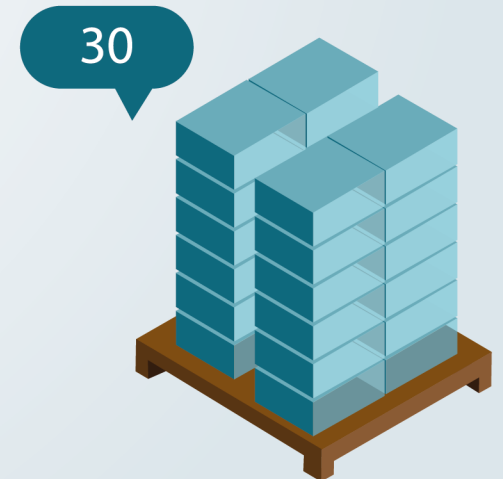


**3. PRESS**

**6. FERROVIAL**



**5. SP GROUP EMAIL ADDRESS**



**4. BALES**

# WHAT ARE THE ADVANTAGES OF TRAY2TRAY?



Forming part of the **Tray2Tray** project allows you to state your collaboration in the **circular economy**, which is very beneficial for you.

The European Commission has adopted resource efficiency as the basis for its **Europe 2020 structural economic strategy**; therefore if you sign up to the Tray2Tray project, you will be in line with its objectives.



By using recycled materials you will be helping **preserve the environment**, due to the reduction in the use of resources, waste and carbon footprint.



Moreover, if you join Tray2Tray **you will not need to manage your waste**, as we will do it free of charge. As there is no waste, you do not need to pay burial or incineration taxes, and by not incinerating the waste there are **no toxic gas emissions**. Thanks to Tray2Tray you will be awarded the **EcoSense certificate** by the **PLASTIC SENSE Foundation**.

So, there are only advantages.



## WHAT IS THE ECOSENSE CERTIFICATE?

The **PLASTIC SENSE Foundation** is a non-profit organisation that promotes the use and recycling of multi-layer plastic packaging. It has created the **ECOSENSE** Brand, with which it aims to ensure organisations that use recycled multi-layer polymers as second-generation raw materials in their production processes stand out from the crowd.

The main goals of the **EcoSense** certificate are:

- To provide **companies** in the value chain with extra **environmental acknowledgement** visible to consumers and interested parties, who are increasingly aware of the repercussions of plastic packaging in the environment.
- **To comply with current legislation** on packaging waste that aims to prevent the generation of waste, and to contribute to a more efficient management of it.
- **To close the economic flow** and flow of resources by fostering eco-design, maintaining the material value of packaging by reintroducing it into the production circuit, and reducing the use of non-renewable resources.
- To provide an obvious **identifying sign** that provides visibility to those suppliers whose products can be incorporated into the production chain.
- **To improve the environmental performance of the organisation**, as working towards the EcoSense certificate can be an environmental objective that will demonstrate the continual improvement in a supplier's environmental management system.

# HOW CAN WE GET THE CERTIFICATE? IT'S VERY EASY WITH SP GROUP

An independent inspection body, credited by the **ENAC** under ISO/IEC 170220, will inspect your company's facilities in order to check the multi-layer polymer recovery system, as well as the incorporation of the materials into the recycling process.

The certificate will be valid for two years and gives you the right to use the **EcoSense** brand.

The independent inspection body will check the documents on a yearly basis, without having to visit the company's facilities.





# tray2tray

*by SP Group*



---

SPAIN

Central Office  
Ctra. Palma del Río, km.10  
Villarrubia, Córdoba (14710)  
T. +34 957 767 612

Rigid Material (Tray2tray)  
Polígono Ind. "El Caño I"  
Espiel, Córdoba (14220)  
T.+34 957 364 137

FRANCE

1, Rue Claude Bernard  
CS 20073 62002 Arras, Cedex, France  
T. +33 (0) 321 236 811

POLAND

Ul. Metalowa 13  
73-102 Stargard, Poland  
T. +48 91 8876077

[www.spg-pack.com](http://www.spg-pack.com)

For further info please email us at: [tray2tray@spg-pack.com](mailto:tray2tray@spg-pack.com)